



800

The Ultimate Bertram



BERTRAM®  
FEEL THE RIDE. LIVE THE LEGEND.





### Exterior Finish

- Maxguard® ( Premium ISO-NPG gelcoat )
- Bomar® hatches powder coated to match gelcoat
- Blister resistant vinyl ester resin in hull bottom skin coat

### Hull, Deck and Flybridge Construction

- Deck: hand laid-up molded fiberglass hull with solid core and sandwich construction
- Flybridge: hand laid-up molded fiberglass and sandwich construction
- Hull: hand laid-up molded fiberglass, solid bottom with vacuum bagged cored hullsides, solid keel and chines using vinyl ester resin
- Solid fiberglass hull bottom. Hull sides & superstructure laminated with high density foam.
- Hull sides above waterline - vacuum bagged with divynycell core

### Hull

- Ball seacocks on all underwater thru hull fittings, all with electrical bonding
- Bertram dark blue waterline stripe
- Bottom paint with primer coat and one coat dark blue anti-fouling paint
- Bow thruster
- Common drain system
- Fuel Tank: FRP, zero trim effect (midship mounted) with fuel level sight glass
- Freshwater tank: FRP
- Holding tank: with liquid level monitors and plumbed for dockside pump out
- Underwater exhaust muffler system
- Recessed transom swim/emergency steps
- Recessed trim tabs, electro-hydraulic
- Sump tank with automatic pump-out for shower and sink
- Zincs, transom mounted

### Deck

- Anchor windlass: electric with deck mounted foot controls
- Anchor: Delta® 140lbs with chain
- Anodized aluminum bow rail with burgee staff
- Cleats: 2 forward, 2 aft with transom hawse pipes, 4 spring line
- Compressed heavy-duty white vinyl rub rail with solid stainless steel insert
- Fuel fills, port & starboard
- Freshwater tank fill
- Fuel fill alarm
- Hatches over engines for ease of engine access
- Powder coated aluminum handrails on pilaster
- Powder coated aluminum handrails over side windows

### Cockpit

- Access hatches to lazarette, gasketed, scuppered, and dogged
- Engine room access door
- Removable hatch to machinery room
- Cockpit coaming padding
- Cockpit mezzanine seating
- Cockpit freezer
- Cockpit storage locker
- Cockpit baitwell
- Dockside electrical connection, 100 AMP/220V (2)
- Glenndinning® Cablemaster (2)
- Dockside water connection with pressure reducing valve
- Doors, port and starboard, to conceal shore power inlets, dockside water inlet, faucets and switches
- Fire extinguisher manual controls
- Freshwater washdown
- Saltwater washdown
- Cockpit lighting
- Molded boarding steps (port & starboard), teak covered

- Salon steps, teak covered
- Reinforcement for fighting chair
- In floor fish box with macerator pump (2)
- Transom fish box insulated, with overboard drain
- Rod holders (4)
- Transom door and gate
- Self-bailing cockpit with large scuppers
- Stereo speakers, watertight
- Under gunwale storage for boat hook and gaff
- Cable TV and telephone connections

### Enclosed Flybridge

- Helm station with all standard gauges, switches, engine controls
- Compass
- Hydraulic steering, power assisted
- Monitoring and alarm systems: bilge, fire, engine temperature, oil pressure, etc.
- Engine synchronizer
- Electric clutch and throttle controls
- Electronics installation console, full width, forward of helm
- Basic electronics
- Lighting, AC and DC
- Air conditioning
- Central vacuum system outlet
- Carpeting
- Helm seat, pedestal, located center line
- Companion bench seat (2), port and starboard
- Settee lounge, L-shaped, starboard side with table and storage
- Wet bar with sink, refrigerator, ice maker, and bottle storage
- Entertainment center with 26" LCD TV AM/FM/CD/DVD/MP3 Player Connection
- Telephone outlet
- Ventilation hatches (2)
- Varnished wood paneling
- Tinted safety glass
- Windshield defrosting system

- Windshield wipers with washers (3), electric
- Aft helm station with steering, clutches, throttles, stop/start switches, horn switch and trim tab controls
- Aluminum rails and stanchions, aft deck
- Bench seating with storage, aft deck

### Engine Compartment and Fuel Systems

- Twin diesel turbo-charged, fresh water cooled main engines with marine gear, engine driven alternators, water separators/ fuel filters, & exhaust mufflers
- Aquamet® shafts
- Bronze rudders and struts
- Dripless shaft seals
- Dual fuel filters-main engines (4 total)
- Air intake, hull sides
- Acoustical and thermal insulation in the engine room
- Vibration dampening isolators for engines
- Emergency engine shut-down system
- Trolling valves
- Hydraulic steering with power assist pump (dual)
- Automatic/Manual blower system for engine room
- Bilge pumps (5); (4) auto/manual, (1) auto only
- Electric hot water heater: 30 gal (2)
- Emergency bilge water evacuation system, engine driven
- Engine and machinery room lighting, AC & DC
- Engine room molded stair access
- Fixed fire extinguishing system for engine and machinery rooms with automatic and remote manual controls plus audible and visual discharge signals
- Generator: 32 kW (2) freshwater-cooled; remote start diesel generators with sound shields. (Generator may not supply power for all standard, optional and owner-added equipment. Power management may be required.)

- Fuel filters on generator supply
- Seawater strainers for generator, air conditioning and saltwater wash down pump
- ARG - Anti Rolling Gyro System, (2) 4000
- Hi-gloss polyurethane finish
- Metered oil change system for engines, gear & generator with quick disconnect
- Removable engine room hatches
- Seacocks, heavy duty manganese bronze

#### Electrical Systems - Deckhouse

- 240V/120V AC input and main distribution panel with voltmeter, ammeter, generator controls, magnetic circuit breakers and shore power selector switches
- 24V/12V DC main distribution panel with voltmeter, ammeter, magnetic circuit breakers and batteries tester
- Alarm Monitor: bilge flood signal for three compartments, black water tank indicator light, high-heat signal in engine and machinery rooms
- Electrical pump-out for toilet holding tank
- Fresh water level gauge
- Light fixtures, 120V AC/ 24V DC
- Radio and cable television system and shore connection
- Telephone jacks with shore connection

#### Electrical Systems - Bridge

- 24V DC flybridge electronics accessory panel with magnetic circuit breakers in console
- 12V DC flybridge electronics accessory panel with magnetic circuit breakers in console
- Alarm Monitor: bilge flood signal for three compartments, black water tank indicator light, high-heat signal in engine and machinery rooms
- Battery parallel switch, remote
- GFI receptacles in console
- Main engine control panel

#### Electrical Systems - Engine Room and Systems Room

- 24V DC batteries panel with switches for main engines and main battery disconnect switches
- 24V DC fuses for uninterrupted power to bilge pumps, fire and bilge flood monitors
- Air conditioning zoned chill water system total 84,000 BTU with bridge windshield demister
- Batteries (8D), heavy duty, 2 banks 4 battery. Each: house & engines; 1 bank 12V generators.
- Battery chargers with thermal cutoff and switching system for complete integration and battery parallel system for main engines and generator
- Bonding system, galvanic and electrical
- Converters (2) 100 amp 24 v
- GFI receptacles
- Isoboost transformers (2)
- Light fixtures, 120V AC/ 24V DC

#### Deckhouse- Salon

- Manual sliding stainless steel door with fixed frameless glass
- Fixed frameless windows with tinted safety glass, forward, port and starboard
- Removable frameless windows with tinted safety glass, aft
- Integrated stairway to flybridge
- Entertainment center with 52" LCD television with Bose® Lifestyle-38 entertainment system
- Choice of White Oak or African Mahogany wood paneling with padded vinyl accents
- Vinyl headliner (whisper wall system)
- Sofa with storage underneath
- Cocktail table
- Dry bar with bottle storage
- Carpeting with acoustic padding
- Air conditioning electronic control
- Electrical distribution panels
- Lighting, 120V AC and 24V DC
- 120V AC receptacles
- Soft blinds

#### Deckhouse- Galley/Dinette

- Corian® solid surface countertops
- Flooring, teak wood
- Cooktop, four burners with conventional oven below
- Microwave oven
- Dishwasher
- Trash compactor
- Garbage disposal
- Sub-zero® under the counter drawer type refrigerator/freezer set (3)
- Scotsman® ice maker
- Designated storage for dishes & glasses
- Storage cabinets & drawers
- Single lever hot and cold faucet
- Dining table with chairs
- Walk in pantry with shelving and cabinet storage forward of galley
- Vinyl headliner
- Central vacuum system outlet
- Lighting, 120V AC

#### Companionway

- Carpeting
- Flush panel doors to staterooms
- Awlgrip® finished bilge storage compartment
- Vinyl headliner and wall covering
- Washer and dryer, walk in closet with shelf and cabinet storage
- Linen closet with central vacuum system outlet
- Lighting 24V DC

#### Master Stateroom

- King size berth with drawer storage beneath
- Mattress, innerspring with spread, pillows, and shams
- Sheets/pillowcases, one set
- Port and starboard nightstands with drawer
- Reading lights
- Built-in dressers with drawers and shelves

- Combination wood paneling/ padded vinyl wall covering
- Dressing table with stool
- Hanging locker, oversized, lighted, cedar lined, starboard side
- Hanging locker, walk-in, lighted, cedar lined, port side
- Headboard, upholstered with padded suede and side mirrors
- Entertainment center with 26" LCD TV and Bose® 3.2.1 entertainment system
- 120V AC GFI receptacles
- Air conditioning electronic control
- Built in digital alarm clock
- Carpeting
- Lighting, 120V AC and 24V DC
- Vinyl headliner
- Oversized hullside window (port and starboard)

#### Forward/VIP Stateroom

- Queen-sized berth with drawer storage beneath
- Mattress, innerspring with spread, pillows, and shams
- Sheets/pillowcases, one set
- Entertainment Center with 19" LCD TV AM/FM/CD/DVD/MP3 Player Connection
- Hanging locker (2), cedar lined with automatic light
- Hullside storage shelves
- Reading lights
- Upper cabinet storage, port & starboard
- Private access to head
- Air conditioning electronic control
- Built in digital alarm clock
- Carpeting
- Lighting, 120V AC / 24V DC
- 120V AC GFI receptacles
- Opening hatch overhead with shade & screen
- Vinyl headliner and wall covering, padded



**Starboard Guest Stateroom**

- Queen-sized berth with lift up storage beneath
- Mattress, innerspring with spread, pillows, and shams
- Sheets/pillowcases, one set
- Entertainment Center with 19" LCD TV AM/FM/CD/DVD/MP3 Player Connection
- Hanging locker, cedar lined with automatic light (2)
- Nightstand with drawer (2)
- Hullside storage shelves
- Reading lights
- Private access to head
- Air conditioning electronic control
- Built in digital alarm clock
- Carpeting
- Lighting, 120V AC / 24V DC
- 120V AC GFI receptacles
- Vinyl headliner and wall covering, padded

**Port Guest Stateroom**

- Berths, twin, side by side with storage beneath
- Mattress, innerspring with spread, pillows, and shams
- Sheets/pillowcases, one set for each berth
- Hanging locker, cedar lined with automatic light
- Entertainment Center with 19" LCD TV AM/FM/CD/DVD/MP3 Player Connection
- Nightstand with drawer
- Reading lights
- Upper hullside cabinet storage
- Private access to head
- Air conditioning electronic control
- Built in digital alarm clock
- Carpeting
- Lighting, 120V AC and 24V DC
- 120V AC GFI receptacles
- Vinyl headliner and wall covering, padded

**Aft Crew Stateroom**

- Berth with storage beneath
- Mattress, foam with spread, pillows, and shams
- Sheets/pillowcases, one set
- Hanging locker, cedar lined with automatic light
- Air conditioning electronic control
- Built in digital alarm clock
- Carpeting
- Stereo with AM/FM/CD/MP3 Player Connection
- Lighting, 120V AC and 24V DC
- 120V AC GFI receptacles
- 12V outlet
- Vinyl headliner and wall covering

**Master Head**

- Countertop, Corain® solid surface with sink
- Dual sinks
- Flooring, teak wood
- Stall shower with door and automatic sump pump
- Tecma® electric toilet system (freshwater)
- Towel bar
- Upper cabinets with mirrored doors
- Exhaust blowers
- Lighting, 120V AC and 24V DC
- 120V AC GFI receptacles

**Forward/VIP Guest Head**

- Countertop, Corain® solid surface with sink
- Flooring, teak wood
- Stall shower with door and automatic sump pump
- Tecma® electric toilet system (freshwater)
- Upper cabinets with mirrored doors
- Exhaust blowers
- Lighting, 120V AC and 24V DC
- 120V AC GFI receptacles

**Starboard Guest Head**

- Countertop, Corain® solid surface with sink
- Flooring, teak wood
- Stall shower with door and automatic sump pump
- Tecma® electric toilet system (freshwater)
- Upper cabinets with mirrored doors
- Exhaust blowers
- Lighting, 120V AC and 24V DC
- 120V AC GFI receptacles

**Port Guest Head**

- Countertop, Corain® solid surface with sink
- Flooring, teak wood
- Stall shower with door and automatic sump pump
- Tecma® electric toilet system (freshwater)
- Upper cabinets with mirrored doors
- Exhaust blowers
- Lighting, 120V AC and 24V DC
- 120V AC GFI receptacles

**Aft Crew Head**

- Flooring, finished surface with drain and wood insert
- Flexible shower system with curtain
- Tecma® electric toilet system (freshwater)
- Exhaust blowers
- Lighting, 120V AC and 24V DC
- 120V AC GFI receptacles

**Salon Day Head (enclosed bridge version)**

- Countertop, Corain® solid surface with sink
- Flooring, wood
- Tecma® electric toilet system (freshwater)
- Exhaust blowers
- Lighting, 120V AC and 24V DC
- 120V AC GFI receptacles

**Salon Day Head (convertible version)**

- Countertop, Corain® solid surface with sink
- Flooring, finished surface with drain and wood insert
- Tecma® electric toilet system (freshwater)
- Exhaust blowers
- Lighting, 120V AC and 24V DC
- 120V AC GFI receptacles

**Coast Guard Mooring and Docking Equipment**

- American flag
- Bertram burgee
- Docking lines braided nylon
- Fire extinguishers, portable
- Fog bell, 8"
- Life jackets (8)
- Life ring
- Owner's manual

**Optional Forward Crew Stateroom  
(adjacent to galley)**

- Single berth with storage beneath
- Mattress, foam with spread, pillows, and shams
- Sheets/pillowcases, one set
- Built in digital alarm clock
- Flooring, carpeting
- Lighting, 120V AC and 24V DC
- 120V AC GFI receptacles
- Vinyl headliner and wall covering, padded

**Optional Forward Crew Stateroom Head  
(included in stateroom option)**

- Flooring, finished surface with drain and wood insert
- Mirrored overhead
- Flexible shower system with curtain
- Tecma® electric toilet system (freshwater)
- Exhaust blowers
- Lighting, 120V AC and 24V DC
- 120V AC GFI receptacles

**Optional Forward Office (adjacent to galley)**

- Integrated desk with chair
- Room for computer, printer and other peripherals
- Telephone and cable TV connectors
- Drawer storage
- Carpeting
- Lighting, 120V AC and 24V DC
- 120V AC GFI receptacles
- Vinyl headliner and wall covering, padded
- Soft blinds
- Forward windows

**Cockpit**

- Cockpit sole, teak
- Coaming cover boards, teak
- Baitwell in transom box
- Table, teak
- Fighting chair, teak
- Fiberglass swim platform
- Icemaker, Eskimo®, for transom fishbox
- Mister system
- Cockpit shower, hot and cold

**Deck/Exterior**

- Underwater lights across transom, 110V (3)
- Underwater lights across transom, 24V (3)
- Gelcoat hull color - Bahama Blue
- Gelcoat hull color - Fighting Lady Yellow
- Video Ray – Sport Edition (Factory Installed)
- Video Ray – Safety Edition (Factory Installed)

**Engine Room/System**

- Fuel polishing system
- International Package (including European specific premium audio visual)
- Watermaker, 700 GPD with auto backflush
- Watermaker, 1400 GPD with auto backflush

**Interior**

- Salon: upgrade sofa to leather (inc. throw pillows)
- Salon: upgrade sofa to ultra-leather (incl. throw pillows)
- Salon: barrel chair
- Dinette: U-shaped with table
- Galley: wine cooler built into cabinetry
- Flooring: upgrade carpet
- Staterooms: sheet set, additional, one set for each berth
- Enclosed bridge: sleeper sofa

**Audio/Visual**

- Master stateroom - 40" LCD television
- Master Stateroom – Bose® Lifestyle-18 audio system
- Aft crew stateroom - 19" LCD TV AM/FM/CD/DVD/MP3 Player Connection
- Forward crew stateroom - 19" LCD TV AM/FM/CD/DVD/MP3 Player Connection
- Forward office - 19" LCD TV AM/FM/CD/DVD/MP3 Player Connection

# Technical Specifications (Enclosed)

# Bertram 800 Convertible & Enclosed Bridge

Size	Overall Length (w/bow pulpit) .....	82 ft. 8 in.	(25.2m)
	Hull Length (Standard ISO 8666).....	78 ft. 8 in.	(23.98m)
	Beam, Max.....	22 ft. 0 in.	(6.70m)
	Draft.....	5 ft. 10 in.	(1.7m)
	Height Above Waterline, Maximum .....	21 ft. 2 in.	
	Cockpit Square Feet.....	285 sq. ft.	

Technical data	Displacement (lbs.).....	185,240 lbs	(84.0 ton)
	Fuel Capacity (US Gal.).....	3,000	(11,355 lt.)
	Fresh Water Capacity (US Gal.) .....	400	(1,515 lt.)
	Holding Tank Capacity (US Gal.).....	200	(757 lt.)

Power	Standard Engine.....	Twin MTU 16V Series 2000, 2200 HP
	Engine Option #1 .....	Twin MTU 16V Series 2000, 2400 HP
	Engine Option #2.....	Twin MTU 16V Series 2000, 2600 HP

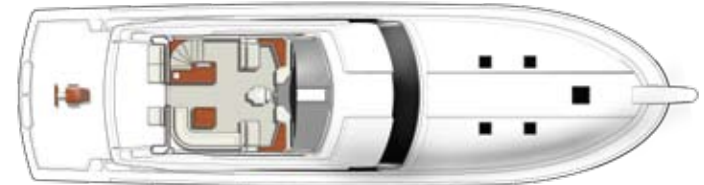
Design Styling & Internal Design..... Bertram Yacht/Zuccon International Project



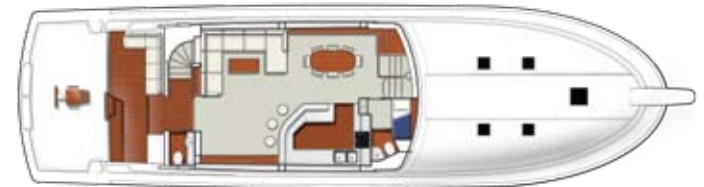
Convertible



Enclosed Bridge



Salon



Staterooms A



Staterooms B







800



FEEL THE RIDE. LIVE THE LEGEND.

BERTRAM YACHT, INC.  
3663 N.W. 21st Street, Miami, Florida 33142  
Phone (305) 633-8011 Fax (305) 635-1388

Bertram Yacht, Inc. reserves the right to make changes at any time, without notice, in design, materials, colors, equipment, models and prices, and to discontinue models. Photographs are shown for illustrative purposes only, and may show items that are optional equipment, special decor or custom items.



Bertram Yacht supports the efforts of  
Guy Harvey's Ocean Foundation.

[www.bertram.com](http://www.bertram.com)